

TUESDAY, JUNE 9

12:00
Registration Opens

17:00-17:30
Coffee Break

17:30-19:30
ESPID
Pre-Congress Symposium

WEDNESDAY, JUNE 10

08:30-10:00
Industry Symposium

10:00-10:30
Coffee Break, Visit Exhibition

10:30-12:00
Industry Symposium

12:00-13:00
Lunch Break, Visit Exhibition

13:00-14:30
Industry Symposium

14:30-15:00
Coffee Break, Visit Exhibition

15:00-16:30
Industry Symposium

16:30-16:50
Ice Cream Break

16:50-18:20
Industry Symposium

18:20-19:00
Opening Ceremony

19:00-20:00
Welcome Buffet Reception

PRELIMINARY TIMETABLE

THURSDAY, JUNE 11

07:30-08:20 Meet the Professor Session 1 Prolonged Fever of Unknown Origin	07:30-08:20 Meet the Professor Session 2 Prophylaxis in Surgery, in Immuno- compromised	07:30-08:20 Expert Discussion 1 How do you Manage Fever in Infants Less than 2 Months Old
08:30-09:30 ESPID Scientific Session 1: Infection Control in Paediatrics: What are the Issues in Hospital, the Community, for Special Populations		
09:30-10:00 Coffee Break, Poster Viewing, Visit Exhibition		
10:00-11:30 ESPID Scientific Session 2: <i>S. Pneumoniae</i> : A Paediatric Pathogen	10:00-11:30 ESPID Scientific Session 3: Emerging or Re-Emerging Serious Bacterial Infections	
11:30-12:30 Bill Marshall Award and Lecture		
12:45-13:45 Research Lunches	12:30-13:45 Lunch Break, Poster Viewing, Visit Exhibition	
13:45-14:30 Awards		
14:30-16:00 Oral Communication 1 Immunity and/or Viral Infections	14:30-16:00 Oral Communication 2 Bacterial Virulence Determinant	
16:00-16:30 Belgian Chocolate and Coffee Break		
16:30-18:00 Interactive Cases Session with Expert Panel 1		
18:00-18:45 ESPID Annual General Assembly (Members only)		
20:30-23:00 ESPID Members and Faculty Dinner		

FRIDAY, JUNE 12

07:30-08:20 Meet the Professor Session 3 Osteomyelitis: Diagnosis and Treatment	07:30-08:20 Meet the Professor Session 4 Practical Situations in Paediatric Infection Control	07:30-08:20 Expert Discussion 2 Urinary Tract Infections Diagnosis and Management
08:30-10:00 ESPID Scientific Session 4: Clinical and Fundamental Bacteriology: What Does it Bring to the Clinician?		
10:00-10:30 Coffee Break, Poster Viewing, Visit Exhibition		
10:30-12:30 ESPID Scientific Session 5: Update on New Diagnostics and Therapeutics Options in Infectious Diseases	10:30-12:30 ESPID Scientific Session 6: Models, Clinical Scores and Evidence Based Medicine in Paediatric Infectious Diseases	
12:15-13:30 Research Lunches	12:00-13:30 Lunch Break, Poster Viewing, Visit Exhibition	
13:30-15:00 Oral Communication 3 Fungal Infections and/or Infections in the Immunocompromised	13:30-15:00 Oral Communication 4 Bacterial Resistance	
15:00-16:30 Poster Session and Coffee Break		
16:30-18:00 ESPID Scientific Session 7 Interaction Between Bacteria and Virus: What's New and Does it Matter?		
20:30-23:00 Farewell Event		

SATURDAY, JUNE 13

09:00-17:00
Walter Marget Educationnal Workshop



**HOW TO BECOME
AN ESPID MEMBER**

The European Society for Paediatric Infectious Diseases – ESPID forms the basis for European investigators interested in infectious diseases in children and infection prevention in childhood. The society is engaged in a number of activities including the organization of multicentre trials, international exchange of infectious disease fellows and an annual conference.

Membership includes subscription to the Paediatric Infectious Disease Journal.

Applications for membership can be made by contacting:

ESPID Secretariat

1-3 Rue de Chantepoulet
PO Box 1726
CH-1211 Geneva 1, Switzerland
Tel: +41 22 908 0488
Fax: +41 22 732 2850
E-mail: espidmembership@kenes.ch
Website: www.espid.org



27th ANNUAL MEETING OF THE
EUROPEAN SOCIETY
FOR PAEDIATRIC
INFECTIOUS DISEASES



ESPID2009

Organized jointly by the ESPID
Society and the ESPID Foundation

BRUSSELS, BELGIUM, JUNE 9-13, 2009

First Announcement

Main Theme
**Serious Bacterial
Infections**

**Abstract
Submission
Deadline:**
January 26, 2009

ESPID

Dear Colleagues,

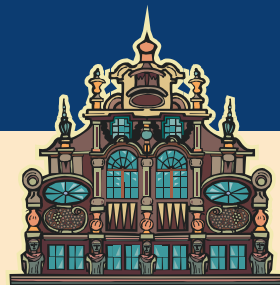
On behalf of the Local Scientific and Organising Committee, it is my great pleasure to invite you to the 27th Annual ESPID Meeting, to be held June 9-13, 2009 in Brussels, Belgium.

The main theme of the meeting will be "Serious Bacterial Infections". The high quality Scientific Program currently evolving through collaboration between local and international experts will open new insights and discussions into epidemiology, diagnosis, prevention, treatment, and clinical presentation of important paediatric diseases. Original contributions by clinicians, researchers and all medical professionals with an interest in paediatrics are highly welcome.

Brussels, the bilingual and multicultural capital city of Belgium, a place rich in European history with a free and easy lifestyle and stunning architecture will provide an ideal location for what promises to be an exciting and memorable meeting.

We look forward to welcoming you to Brussels for ESPID 2009.

Philippe Lepage Chair, Organising Committee
Anne Vergison Chair, Scientific Committee



ESPID BOARD

Andrew Cant, President
Maria N. Tsolia, Secretary
Richard Fabian Schumacher, Treasurer
Christoph Aebi, Member
Javier Diez-Domingo, Member
Vytautas Usonis, Member
Robert Cohen, Member Elect

SCIENTIFIC & LOCAL ORGANISING COMMITTEE

Philippe Lepage, Chair, Organising Committee
 Co-chair, Scientific Committee
Anne Vergison, Chair, Scientific Committee
 Co-chair, Organising Committee

Pierre Smeesters, Secretary
Jack Levy
Anne Malfroot
Marc Raes
José Ramet
Petra Schelstraete
Marc Struelens
David Tuerlinckx
Pierre Vandamme
Johan Van Eldere
Yves Van Laethem
Stefaan Van Lierde



ABOUT BRUSSELS

Situated between France and The Netherlands, Brussels is the capital city of Belgium and also the administrative centre of the European Union. Originally Flemish, now with a large majority of French-speaking population, Brussels is officially a bilingual city.

Brussels has the advantage of being a cosmopolitan city which merges the past into a friendly and multicultural atmosphere. Home to a wealth of international institutions, trade and financial companies, the vibrant atmosphere of Brussels is further enhanced by picturesque medieval streets, lively squares, spacious parks, cosy cafés, world-class restaurants and an active cultural life.



One can find a great variety and contrast in the different architectural styles in Brussels, the former capital of the medieval Duchy of Brabant. Gothic cathedrals and churches stand in stark contrast with gracious classical facades like the buildings around the Royal Square or beautiful art nouveau and art deco structures. The heart of Brussels and the place to start getting to know the city is the magnificent Grand'Place. With its wide-open cobbled medieval square, elegant guild houses and the impressive Gothic beauty of the Town Hall, it is widely considered to be one of the most beautiful town squares in Europe.

GENERAL INFORMATION

Venue
 Brussels Exhibition Center (Brussels Expo)
 Belgiëplein 1
 B-1020 Brussels
 Belgium
 Tel: +32 (0)2 474 82 55
 Fax: +32 (0)2 474 83 94

Official Language
 The official language of the Meeting is English.

Trade Exhibition
 An exhibition by pharmaceutical companies will take place within the framework of the Meeting. Potential exhibitors can request information from Ms. Maya Ronen, Industry Liaison & Sales.
 Email: mronen@kenes.com

Accommodation
 Kenes International is the official travel agent for the 26th Annual Meeting of the European Society for Paediatric Infectious Diseases – ESPID to be held in Graz and will be offering specially reduced rates for accommodation. Further information will be available on the website and in the Second Announcement.

Meeting Secretariat
 Kenes International / ESPID 2009

KENES International
 CARES FOR YOUR ORGANIZATION
 GLOBAL CONGRESS ORGANIZERS AND
 ASSOCIATION MANAGEMENT SERVICES

1-3 Rue de Chantepoulet, PO Box 1726
 CH-1211 Geneva 1, Switzerland
 Tel: +41 22 908 0488
 Fax: +41 22 732 2850
 E-mail: espid@kenes.com
 Website: www.kenes.com/espid

