

**TUESDAY, JUNE 9**

12:00  
**Registration Opens**

17:00-17:30  
Coffee Break

17:30-19:30  
**ESPID  
Pre-Congress Symposium**

**WEDNESDAY, JUNE 10**

08:30-10:00  
**Industry Symposium**

10:00-10:30  
Coffee Break, Visit Exhibition

10:30-12:00  
**Industry Symposium**

12:00-13:00  
Lunch Break, Visit Exhibition

13:00-14:30  
**Industry Symposium**

14:30-15:00  
Coffee Break, Visit Exhibition

15:00-16:30  
**Industry Symposium**

16:30-16:50  
Ice Cream Break

16:50-18:20  
**Industry Symposium**

18:20-19:00  
**Opening Ceremony**

19:00-20:00  
**Welcome Buffet Reception**

**PRELIMINARY TIMETABLE**

**THURSDAY, JUNE 11**

07:30-08:20 Meet the Professor Session 1 Prolonged Fever of Unknown Origin	07:30-08:20 Meet the Professor Session 2 Prophylaxis in Surgery, in Immuno- compromised	07:30-08:20 Expert Discussion 1 How do you Manage Fever in Infants Less than 2 Months Old
08:30-09:30 <b>ESPID Scientific Session 1: Infection Control in Paediatrics: What are the Issues in Hospital, the Community, for Special Populations</b>		
09:30-10:00 Coffee Break, Poster Viewing, Visit Exhibition		
10:00-11:30 <b>ESPID Scientific Session 2: S. Pneumoniae: A Paediatric Pathogen</b>	10:00-11:30 <b>ESPID Scientific Session 3: Emerging or Re-Emerging Serious Bacterial Infections</b>	
11:30-12:30 <b>Bill Marshall Award and Lecture</b>		
12:45-13:45 <b>Research Lunches</b>	12:30-13:45 Lunch Break, Poster Viewing, Visit Exhibition	
13:45-14:30 <b>Awards</b>		
14:30-16:00 <b>Oral Communication 1 Immunity and/or Viral Infections</b>	14:30-16:00 <b>Oral Communication 2 Bacterial Virulence Determinant</b>	
16:00-16:30 Belgian Chocolate and Coffee Break		
16:30-18:00 <b>Interactive Cases Session with Expert Panel 1</b>		
18:00-18:45 <b>ESPID Annual General Assembly (Members only)</b>		
20:30-23:00 <b>ESPID Members and Faculty Dinner</b>		

**FRIDAY, JUNE 12**

07:30-08:20 Meet the Professor Session 3 Osteomyelitis: Diagnosis and Treatment	07:30-08:20 Meet the Professor Session 4 Practical Situations in Paediatric Infection Control	07:30-08:20 Expert Discussion 2 Urinary Tract Infections Diagnosis and Management
08:30-10:00 <b>ESPID Scientific Session 4: Clinical and Fundamental Bacteriology: What Does it Bring to the Clinician?</b>		
10:00-10:30 Coffee Break, Poster Viewing, Visit Exhibition		
10:30-12:30 <b>ESPID Scientific Session 5: Update on New Diagnostics and Therapeutics Options in Infectious Diseases</b>	10:30-12:30 <b>ESPID Scientific Session 6: Models, Clinical Scores and Evidence Based Medicine in Paediatric Infectious Diseases</b>	
12:15-13:30 <b>Research Lunches</b>	12:00-13:30 Lunch Break, Poster Viewing, Visit Exhibition	
13:30-15:00 <b>Oral Communication 3 Fungal Infections and/or Infections in the Immunocompromised</b>	13:30-15:00 <b>Oral Communication 4 Bacterial Resistance</b>	
15:00-16:30 Poster Session and Coffee Break		
16:30-18:00 <b>ESPID Scientific Session 7 Interaction Between Bacteria and Virus: What's New and Does it Matter?</b>		
20:30-23:00 <b>Farewell Event</b>		

**SATURDAY, JUNE 13**

09:00-17:00  
**Walter Marget Educationnal Workshop**



**HOW TO BECOME  
AN ESPID MEMBER**

The European Society for Paediatric Infectious Diseases – ESPID forms the basis for European investigators interested in infectious diseases in children and infection prevention in childhood. The society is engaged in a number of activities including the organization of multicentre trials, international exchange of infectious disease fellows and an annual conference.

Membership includes subscription to the Paediatric Infectious Disease Journal.

Applications for membership can be made by contacting:

**ESPID Secretariat**

1-3 Rue de Chantepoulet  
PO Box 1726  
CH-1211 Geneva 1, Switzerland  
Tel: +41 22 908 0488  
Fax: +41 22 732 2850  
E-mail: [espidmembership@kenes.ch](mailto:espidmembership@kenes.ch)  
Website: [www.espid.org](http://www.espid.org)



27th ANNUAL MEETING OF THE  
**EUROPEAN SOCIETY  
FOR PAEDIATRIC  
INFECTIOUS DISEASES**



**ESPID2009**

Organized jointly by the ESPID  
Society and the ESPID Foundation

BRUSSELS, BELGIUM, JUNE 9-13, 2009

**First Announcement**

Main Theme  
**Serious Bacterial  
Infections**

**Abstract  
Submission  
Deadline:**  
January 26, 2009

# ESPID

## Dear Colleagues,

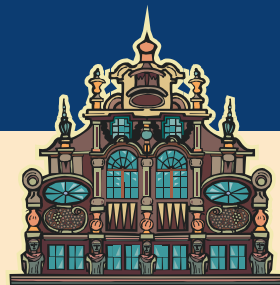
On behalf of the Local Scientific and Organising Committee, it is my great pleasure to invite you to the 27<sup>th</sup> Annual ESPID Meeting, to be held June 9-13, 2009 in Brussels, Belgium.

The main theme of the meeting will be "Serious Bacterial Infections". The high quality Scientific Program currently evolving through collaboration between local and international experts will open new insights and discussions into epidemiology, diagnosis, prevention, treatment, and clinical presentation of important paediatric diseases. Original contributions by clinicians, researchers and all medical professionals with an interest in paediatrics are highly welcome.

Brussels, the bilingual and multicultural capital city of Belgium, a place rich in European history with a free and easy lifestyle and stunning architecture will provide an ideal location for what promises to be an exciting and memorable meeting.

We look forward to welcoming you to Brussels for ESPID 2009.

**Philippe Lepage** Chair, Organising Committee  
**Anne Vergison** Chair, Scientific Committee



## ESPID BOARD

**Andrew Cant**, President  
**Maria N. Tsolia**, Secretary  
**Richard Fabian Schumacher**, Treasurer  
**Christoph Aebi**, Member  
**Javier Diez-Domingo**, Member  
**Vytautas Usonis**, Member  
**Robert Cohen**, Member Elect

## SCIENTIFIC & LOCAL ORGANISING COMMITTEE

**Philippe Lepage**, Chair, Organising Committee  
Co-chair, Scientific Committee  
**Anne Vergison**, Chair, Scientific Committee  
Co-chair, Organising Committee

**Pierre Smeesters**, Secretary  
**Jack Levy**  
**Anne Malfroot**  
**Marc Raes**  
**José Ramet**  
**Petra Schelstraete**  
**Marc Struelens**  
**David Tuerlinckx**  
**Pierre Vandamme**  
**Johan Van Eldere**  
**Yves Van Laethem**  
**Stefaan Van Lierde**



## ABOUT BRUSSELS

Situated between France and The Netherlands, Brussels is the capital city of Belgium and also the administrative centre of the European Union. Originally Flemish, now with a large majority of French-speaking population, Brussels is officially a bilingual city.

Brussels has the advantage of being a cosmopolitan city which merges the past into a friendly and multicultural atmosphere. Home to a wealth of international institutions, trade and financial companies, the vibrant atmosphere of Brussels is further enhanced by picturesque medieval streets, lively squares, spacious parks, cosy cafés, world-class restaurants and an active cultural life.



One can find a great variety and contrast in the different architectural styles in Brussels, the former capital of the medieval Duchy of Brabant. Gothic cathedrals and churches stand in stark contrast with gracious classical facades like the buildings around the Royal Square or beautiful art nouveau and art deco structures. The heart of Brussels and the place to start getting to know the city is the magnificent Grand'Place. With its wide-open cobbled medieval square, elegant guild houses and the impressive Gothic beauty of the Town Hall, it is widely considered to be one of the most beautiful town squares in Europe.

## GENERAL INFORMATION

### Venue

Brussels Exhibition Center (Brussels Expo)  
Belgiëplein 1  
B-1020 Brussels  
Belgium  
Tel: +32 (0)2 474 82 55  
Fax: +32 (0)2 474 83 94

### Official Language

The official language of the Meeting is English.

### Trade Exhibition

An exhibition by pharmaceutical companies will take place within the framework of the Meeting. Potential exhibitors can request information from Ms. Maya Ronen, Industry Liaison & Sales.  
Email: mronen@kenes.com

### Accommodation

Kenes International is the official travel agent for the 26<sup>th</sup> Annual Meeting of the European Society for Paediatric Infectious Diseases – ESPID to be held in Graz and will be offering specially reduced rates for accommodation. Further information will be available on the website and in the Second Announcement.

### Meeting Secretariat

Kenes International / ESPID 2009

**KENES International**  
CARES FOR YOUR ORGANIZATION  
GLOBAL CONGRESS ORGANIZERS AND  
ASSOCIATION MANAGEMENT SERVICES

1-3 Rue de Chantepoulet, PO Box 1726  
CH-1211 Geneva 1, Switzerland  
Tel: +41 22 908 0488  
Fax: +41 22 732 2850  
E-mail: [espid@kenes.com](mailto:espid@kenes.com)  
Website: [www.kenes.com/espid](http://www.kenes.com/espid)

